

You're receiving this email because of your relationship with GED Integrated Solutions. Please [confirm](#) your continued interest in receiving email from us.

You may [unsubscribe](#) if you no longer wish to receive our emails.

## GED Integrated Solutions

**GED will provide you with the BEST solution to meet 30/30 Tax Credit Requirements and all ENERGY STAR standards!**

Intercept ULTRA Stainless Steel material carries a conductivity rating of 13.63 W/mK (verified by the NFRC), which translates into a 20% reduction from standard Stainless Steel material, and results in unit U-values that are equal to or better than those found on other competitive spacer products.

**CALL TODAY** to discuss how GED can provide you with a **seamless conversion** of any Intercept platform in order to produce ULTRA units, **with no capital expense.**

**FEEDER PRESS - Intercept GEN 1 or GEN 2 Tinplate to ULTRA Conversion Includes:**

**Pneumatics:** Retain existing cylinders and add dual-zone pre-charge control allowing pre-charge pressure in the corner and leading tab punch cylinders to be controlled independently.

**Die Tooling:** Custom engineered corner, tab, and muntin tooling replaces the standard parts to ensure long life of the hole tooling.

**Gas Hole Tooling:** Carbide punch and matrix bushings ensure long life of the hole tooling.

**Roller Gibs:** These assemblies have precision gapped rollers between which the punched strip passes. These rollers flatten the strip after the corner and leading tabs to decrease strip jams.

**Hardened Feed Rolls:** Hardened tool steel strip feeder rolls are installed which avoid roll grooving by ULTRA material.

**Old Feeder Press:** Shipped back to GED as core replacement.

**ROLL FORMER - Intercept GEN 1 or GEN 2 Tinplate to ULTRA Conversion Includes:**

**Rolls:** Special roll tooling is used to form the ULTRA material.

**Hardened Encoder Bracket:** Prevents grooving by the ULTRA material passing through.

**Drive System Rebuild:** All sprockets and chains are replaced. Stands, bearings and rails are inspected to ensure proper operation.

**Corner Crimper Added at End of Roll Former:** This applies a slight dimple to each corner web resulting in a positive inward fold of the corner.

**Old Roll Former:** Shipped back to GED as a core replacement.

### ADDITIONAL ON-SITE RETROFIT APPLICATIONS

#### CUTOFF PRESS

**Die Tooling:** Hardened tooling replaces the standard parts to facilitate proper cutting and forming of the ULTRA Material.

#### EXTRUDER

**Hardened Spacer Hold-Downs:** Hardened tool steel hold-downs are fitted to the Extruder heads to avoid grooving by ULTRA material.

**Roller Infeed Guides:** Replace the side guides to prevent premature wear of the Spacer guides.

**Contact Your GED Representative Today for Your ULTRA Justification, Financial Program Options and Further Information!**

**Dan Reinhart, GED Director of Sales & Midwest Region Sales Representative:**  
330.487.5006

**Mike Burke - Eastern Region:**  
631.404.7992

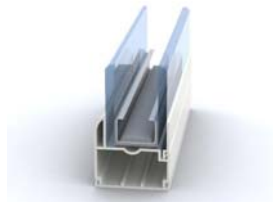
**Tom Calcei - Western Region:**  
330.487.5056

**Larry Gwinn - Southern Region:**  
330.487.5007

**Christopher Wale - United Kingdom & European Region:**  
01144.781.577.6089

**GED**  
Intercept ULTRA

**Intercept System IGU's are produced in the most productive and cost effective method found in the industry today!**



\*Material costs reduced up to 33% vs. all other spacer products

\*Increased production three to four times over other spacer systems

\*No additional labor or training costs

\*Intercept process provides greater reliability for high quality IGU's vs. all manually-applied spacer methods

### CONVERSION OPTIONS

#### Intercept GEN I & GEN II's:

##### Option #1:

**"Flip" Conversion:** GED supplies a remanufactured ULTRA Roll Former and Feeder Press as core replacement.

Remanufactured line will be a standard Intercept platform (if you have a GEN I, you get back a GEN I, etc.)

The converted components on this machine will be BLACK and silver.

Six (6) month warranty on new parts only.

One (1) week installation time; two (2) weeks only if needed for training 'comfort' level.

##### Option #2:

**"Re-Tool" Conversion to ULTRA** current line (most likely second line) to ULTRA. Customer to send GED existing Roll Former and Feeder Press and GED will convert this line.

Three (3) to five (5) weeks to convert and shipped back to customer.

Six (6) months warranty on new parts only.

One (1) week installation.

#### i-3 Intercept

Conversion completed **ONLY** at the customer site.

Options for install to start on weekend and continue for one (1) week.

**GED**  
Integrated Solutions

GED Integrated Solutions  
9280 Dutton Drive  
Twinsburg, Ohio 40087

330.963.5401  
Fax: 330.963.0584  
[www.gedusa.com](http://www.gedusa.com)

Monday-Friday:  
8:00 a.m. - 5:00 p.m.

